



Nepean Conservation Group

Caring for Our Country since 1973

Annual General Meeting 2017

Housekeeping notes

Enjoy your picnic dinner in PNNP this evening. Please take your rubbish home with you.

Please leave the PNNP by 8.00 pm

Thank you to PV for the venue, the support and warm welcome





Nepean Conservation Group Annual General Meeting 2016

Caring for Our Country since 1973

AGENDA

1. Welcome to Members, Friends, Guests and Visitors
2. Apologies
3. Confirmation of Minutes of 2016 AGM
4. President's Report ppt presentation
5. Treasurer's Report
6. Election of Committee for 2017
7. General Business
8. Close of AGM

9. Introduction of Guest Speaker: David Gabriel-Jones
10. Vote of Thanks
11. BYO picnic dinner PNNP





Nepean Conservation Group

Caring for Our Country since 1973

2017 President's report



Ursula de Jong

I would like to acknowledge the traditional owners of this land: the Bunerong/ Boon wurrung people, and pay my respects to elders past and present.

The jurisdiction of the NCG Inc covers the whole of the Nepean Ward in the Mornington Peninsula Shire.



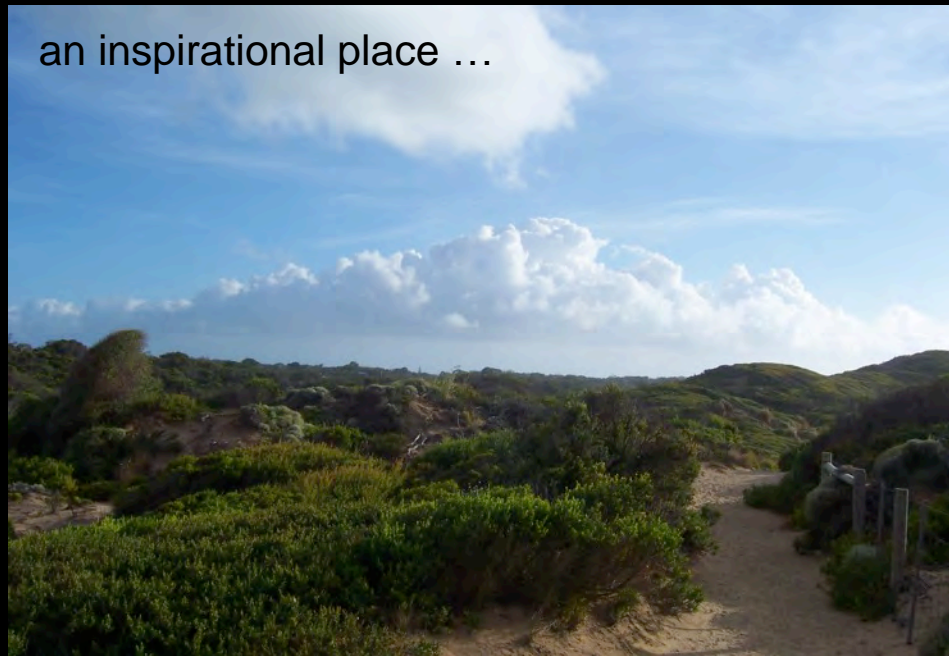




The Nepean Peninsula is



an inspirational place ...





The NCG Constitution which dates from 1973, states that the objects of our group are

- (a) To make every effort to ensure that the land and waters of the [Nepean Peninsula] are used with wisdom and foresight and that the competing demands upon them are resolved in the best long terms interests thereof
- (b) To foster the conservation of the vegetation and fauna and natural features ...
- (c) To cooperate with, or promote cooperation ... among persons, trusts, corporations, firms, associations, institutions, governments, ... concerned with or interested in conservation
- (d) generally, to take such action as it considers necessary or appropriate in the interests of promoting conservation...

Nepean Conservation Group Inc (NCG) was formed in 1973 by local people who felt connected to this place.

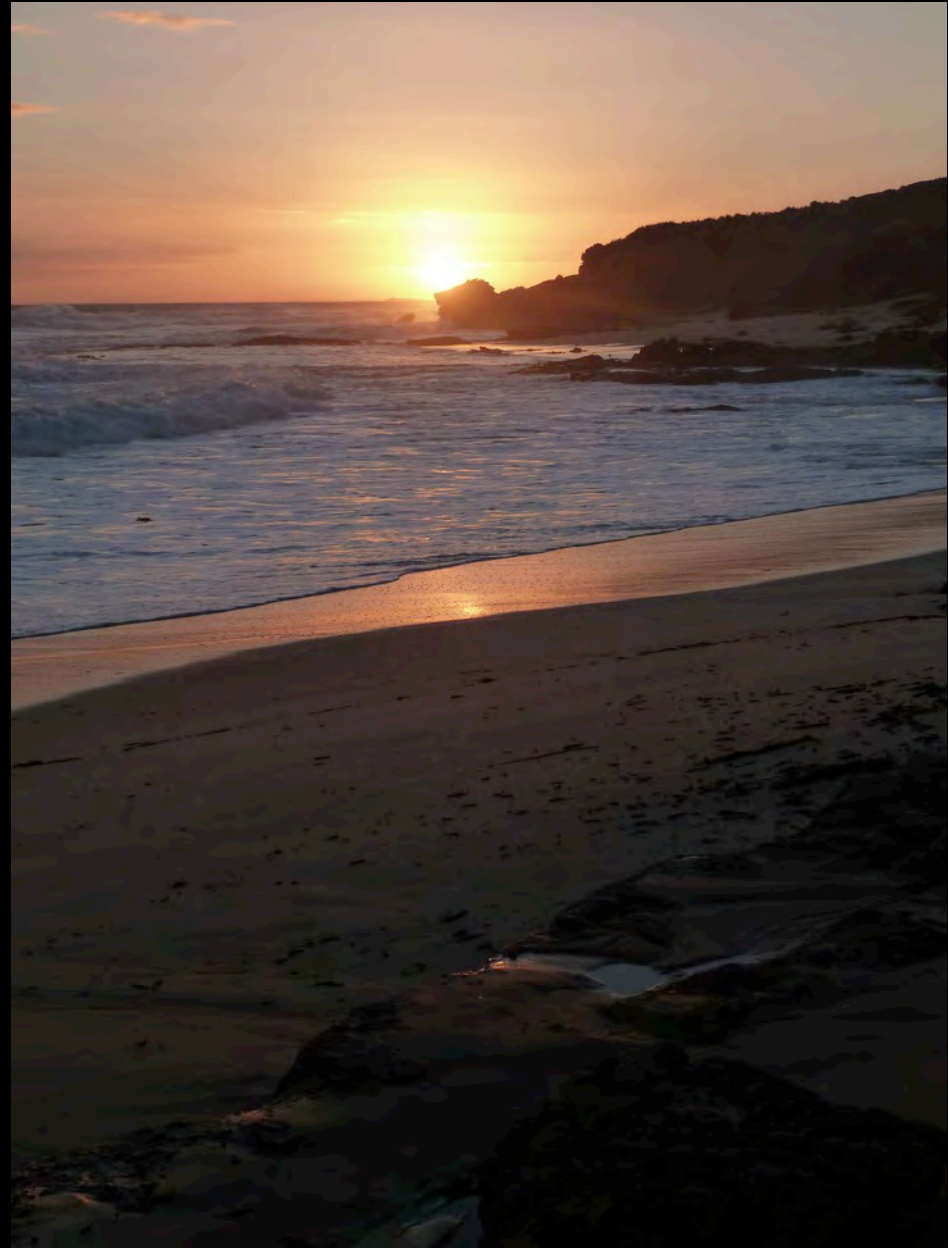
A sense of place is a complex connection between land and self

A sense of place provides a sense of belonging and of commitment.

It is the repository for our shared memories, experiences and dreams.

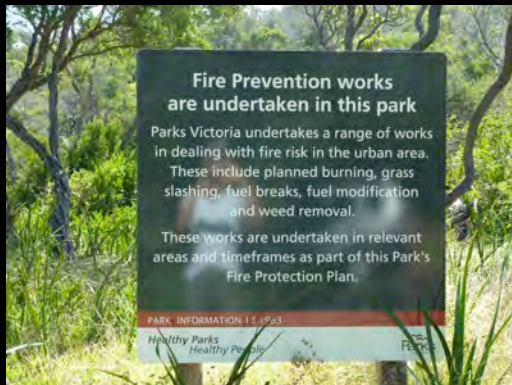
It is a place of family and community ties that stems from our connection to a particular location and its people.

Membership (active or passive) of the NCG stems largely from this connection to and concern for place.



Planning and Environmental issues

The NCG deals with issues as diverse as vegetation and development overlays; heritage; townscapes; public access; neighbourhood character; hooded plovers; historic towns and fire protection. The NCG in conjunction with Parks Victoria and the Mornington Peninsula Shire, coordinates Friends Groups that care for bushland parks and coastal reserves, for flora and fauna, on the Nepean Peninsula. We work closely with the NHS and the NRA.



Change has been constant, development gathering pace over time and now seemingly engulfing the place itself.

Coastal areas such as the Nepean Peninsula have been undergoing change faster than most other areas in Victoria. Environmental and heritage overlays have not protected the historic town of Sorrento or its hinterland the Nepean Peninsula.

Coastal scenic quality is an amenity that attracts new residents, visitors and tourists alike, yet is threatened by new development accompanying them. The pressures of the 'sea change' phenomenon, increased tourism and holiday home ownership, and ever-improving access continue to have major impacts.



The impact of these changes is that the locally unique constellation of landscape features that have traditionally defined the character of many coastal towns is slowly, but surely, being eroded and replaced by one of global uniformity in the built environment and a degraded natural environment.

Residential; commercial; bayside



RT Edgar



Designed by renowned architect Ilaro Cortese, six luxury apartments in coveted position of Ocean Beach Road Sorrento. Act now to secure this rare opportunity and maximise Stamp Duty Savings. For further information contact

Ilze Moran 0439 840 550 | Warwick Anderson 0418 320 873

Portsea Office 59844 500 | rtedgar.com.au

OCEAN

Corner Ocean Beach Road and Kerford Road

NCG Vision and Mission

‘VISION: The NCG’s vision is for people to understand and appreciate the natural, cultural and built heritage that contributes to the sense of place of the Nepean Peninsula, in order to protect and conserve the amenity and enhance the character of the Nepean Peninsula.’

‘MISSION: To lead and inspire the community to appreciate, recognise, conserve, protect and celebrate the natural, cultural and built heritage of the Nepean Peninsula.’



Applications for permits

While coastal landscapes, such as that of the Nepean Peninsula are highly valued by the wider community for their scenic beauty and for recreational activities, they are also highly desirable as real estate.

One of the consequences of increasing suburbanisation has been the loss of character of place. Balancing the economic, social and infrastructure needs of growing residential and tourism communities with environmental sustainability and the capacity of such a sensitive coastal landscape continues to be a considerable planning conundrum.

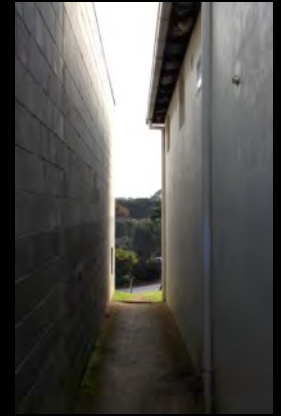


The Sea change communities: intergenerational perception and sense of place [ARC Linkage project LP110200787] research was completed in December 2016. The five Linkage Partners are the Queenscliffe Community Association, the Queenscliffe Historical Museum, the Nepean Historical Society and the Nepean Conservation Group, and the strategic planning and urban design consultants Planisphere Pty Ltd.

The aim of the research has been to establish a more rigorous method of evaluating the physical and perceived impact of the sea change process on sense of place, specifically on the built and natural environments of coastal settlements, using both quantitative and qualitative measures.

This methodology was designed to assist those communities to implement effective, place-sensitive sustainable planning and associated development practices.

Sea change communities: intergenerational perception and sense of place
[ARC Linkage project LP110200787]



Commercial case studies Sorrento

Over scale mixed use development proposed, not in keeping with HO: Carmel bed and breakfast; the Continental Hotel; SALT; Mitre 10 sold.

Koonya Hotel and apartment development considered a good outcome. Spaces in between.

Sea change communities: intergenerational perception and sense of place
[ARC Linkage project LP110200787]

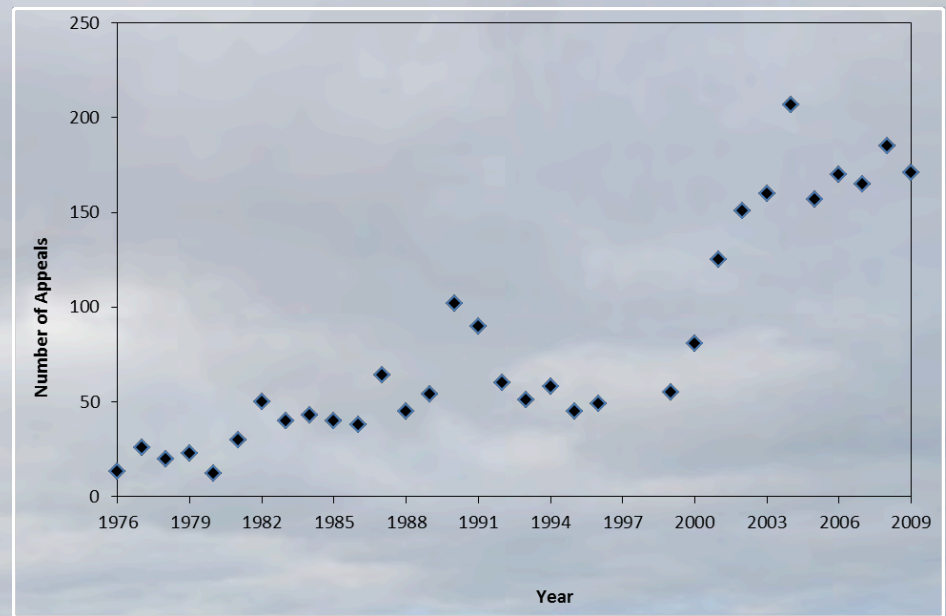


Residential case studies Sorrento

Collins Settlement Site “emerging character”; special subdivision 1 Queens Road; NC contravened 17 Keating; NC St Paul’s Rd (extension); overdevelopment 5 Kinneil St impacting TT

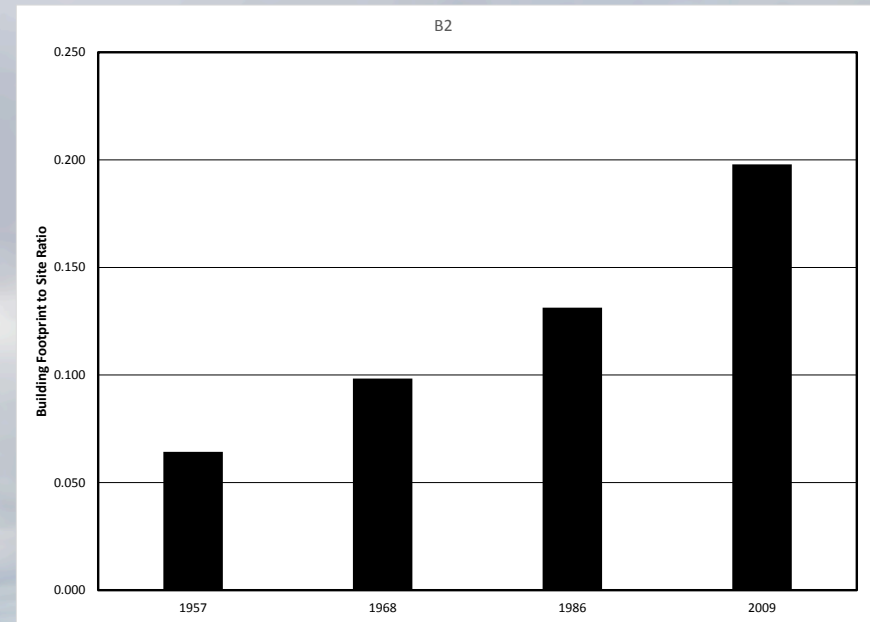


*What did we find?
Appealing' seems to be
growing in appeal ...*



The NCG is not against development per se, but we are against inappropriate development. We value our planning overlays – environmental and heritage – we ask that they are upheld and enforced. We ask that permit applications are just that – requests to vary the stipulations of the overlays – with very sound reasons to do so. Unfortunately permission is generally granted to any application, unless there is an objection and then the outcome is generally a compromise of the overlay.

*What did we find?
House sizes have been
steadily increasing
and vegetation loss
increasingly evident*



“Neighbourhood character is the qualitative interplay of built form, vegetation and topographic characteristics, in both the private and public domains that make one place different from another”.

(Planisphere, Moonee Valley Neighbourhood Character Study, Final Report, 2012, p. 21)



In Sorrento township: heritage remains as policy not yet part of Planning Scheme

*The Ocean Beach Road Commercial Precinct Sorrento Heritage Policy for Planning Applications for Places in the Heritage Overlay (prepared for the MPS Council by HLCD P/L) in 2015. This excellent piece of work was adopted as policy by the MPSC and includes sub policies for the East, Central, North West and South West precincts. **Ocean Beach Road commercial precinct interim DDO C 203** was approved by the Minister on 15 December 2016. C204 went on public exhibition, which closed without community groups being aware and therefore unable to make a submission..*

*The 1803 Collins Settlement Site: Future Directions Management Plan (Final report Dec 2002 prepared for Parks Victoria and the Mornington Peninsula Shire). Unfortunately this excellent plan has **not** been at the forefront of considerations since its adoption in 2003, and some of the visions are no longer possible because of extensive and inappropriate development (for on example the Eastern Sister).*

Sea change communities: intergenerational perception and sense of place
[ARC Linkage project LP110200787]



Improving Planning Outcomes in Small Coastal Towns

Ursula de Jong, Robert Fuller, David Beynon

Improving Planning Outcomes in Small Coastal Towns

This document has been prepared for the use of communities in small towns across Victoria, Australia, to improve planning outcomes in their townships. It is an outcome of the Australian Government Research Council's supported research project:

'Sea change' communities: Intergenerational perception and sense of place.

A Deakin University led ARC LINKAGE PROJECT: LP110200787, undertaken by Associate Professor Ursula de Jong, Dr Robert Fuller, and Dr David Beynon, from the School of Architecture and Built Environment, Deakin University, Geelong, Victoria @ 2016.

The researchers would like to acknowledge the support of the five Linkage Partners: the Queenscliffe Community Association, the Queenscliffe Historical Museum, the Nepean Historical Society and the Nepean Conservation Group, and the strategic planning and urban design consultants Planisphere Pty Ltd. The researchers alone take full responsibility for the content of this document.

The researchers welcome any feedback: ursula.dejong@deakin.edu.au

Achieving better outcomes requires a multi-pronged approach. The key areas can be summarised as better education, improved processes and clearer planning provisions.

This booklet looks at residents; architects, building designers, clients, developers; local council; planning schemes; VCAT; Heritage Victoria. The document has been prepared for the use of communities in small towns across Victoria to improve planning outcomes in their townships. It should also be used by Councillors and planners in conjunction with the "Protecting Distinctive places" document.

Recommendation 1

There needs to be clarity in the LGA, Shire, Borough vision, and a clear connection to the desires of the community. New developments need to be primarily evaluated on their positive contribution to this vision.

Recommendation 2

Plot ratio ('controls to relate the allowable floor area of a development to the size of the site') would be a useful additional control. Used in combination with other controls (such as height limits, site coverage, setbacks) it would prevent inappropriate massing of new developments.

Recommendation 3

Rules governing percentage of site coverage need to be revised, in particular to stop vegetation loss (also to be used in combination with other limits as outlined in recommendation 2).

Recommendation 4

There needs to be more clarity in planning process implementation. Removal of ambiguity in wording of planning schemes and more mandatory clauses would help to overcome inconsistency in rulings between planners, or by one planner in different cases.

Recommendation 5

The character of precincts should be the primary guides for decision making (rather than each case being taken in isolation). This is particularly important when dealing with 'contributory' buildings (ones that are not specifically covered by heritage overlays), and sites on the boundaries between zones and overlay areas.

The Eastern and Western Sisters: Nee Morna for sale

The NCG remains deeply concerned about the integrity of this historic site: the 'emerging character' of the built form has irrevocably damaged the NC of the ES; erosion threatens the stability of the E and W Sisters; planning issues around the fence; subdivision threatens the Western Sister as well ...

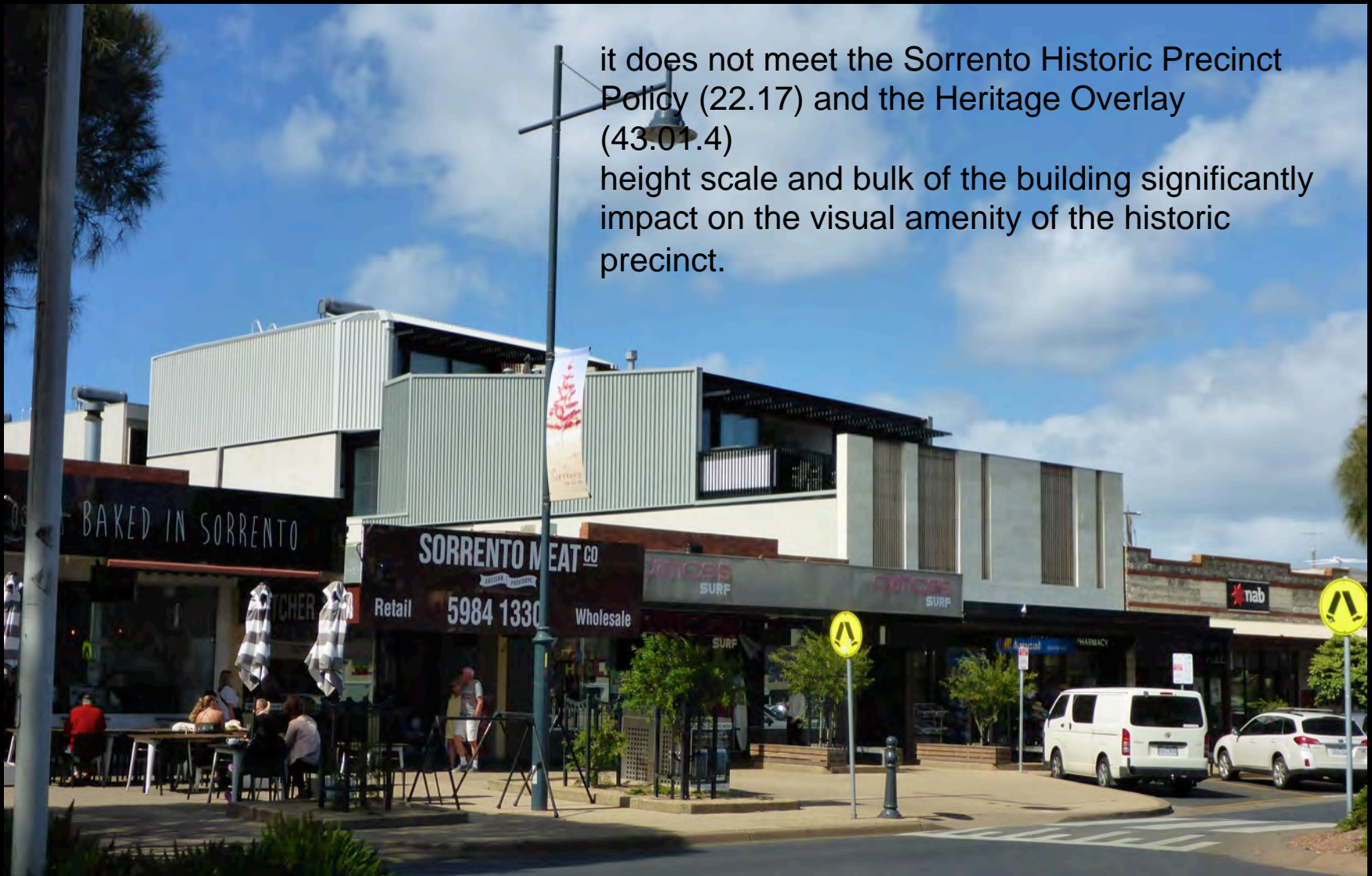


 Nee Morna, one of the original Sorrento trophy mansions, is on sale for the just the second time in more than a century.

Sorrento Heritage continues to be under threat from development:

it does not meet the Sorrento Historic Precinct Policy (22.17) and the Heritage Overlay (43.01.4)

height scale and bulk of the building significantly impact on the visual amenity of the historic precinct.

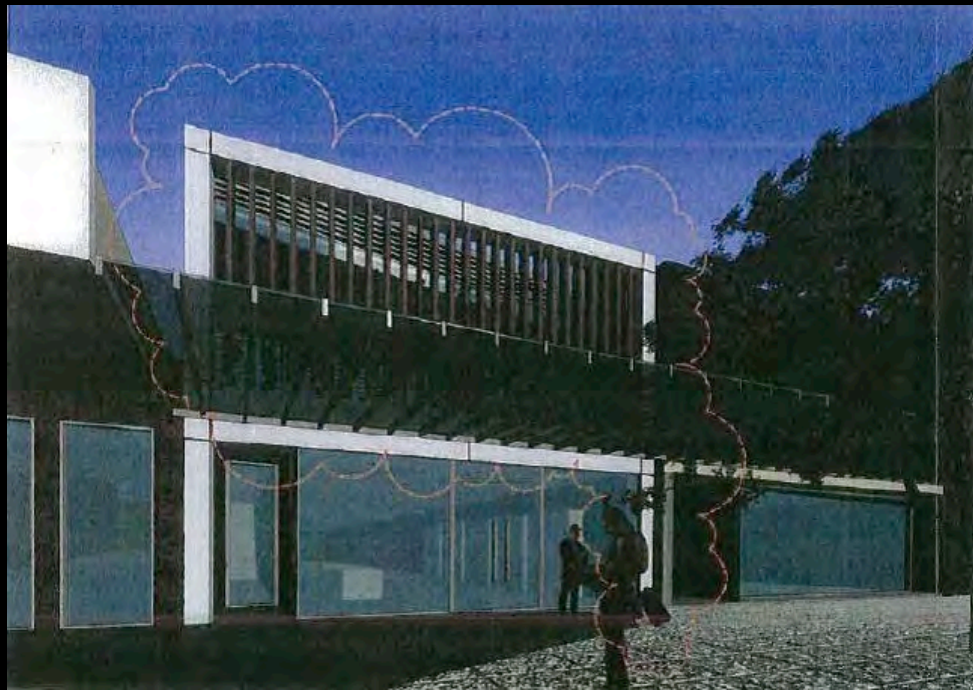


Changing Sorrento is this where is began?

*Sorrento Heritage continues to be under threat from development: Ozmosis
57-59 Ocean Beach Road Sorrento: another VCAT hearing from 2015*



After planners recommended issuing a Permit the MPSC refused to grant a permit, the developer has taken the matter to VCAT. NCG supported MPSC in its position to refuse a permit for this development, as it does not meet the Sorrento Historic Precinct Policy (22.17) and the Heritage Overlay (43.01.4) The proposed height scale and bulk of the building will significantly impact on the visual amenity of the historic precinct. VCAT approved the granting of a permit. MPSC investigating its options.



BIRD'S EYE VIEW - NORTH WEST

Sorrento Heritage continues to be under threat from development:

SALT
APARTMENTS FOR SALE THE HEART OF SORRENTO RETAIL SPACES FOR SALE AND LEASE
SALTSORRENTO.COM.AU

APT 5 - 2 BEDS 2 BATH 1 CAR PARK
APT 14 - 3 BEDS 3 BATH 2 CAR PARK
APT 15 - 2 BEDS 2 BATH 1 CAR PARK

RETAIL 17 - 95.5sqm FOR SALE
RETAIL 22 - 90.00sqm SALE OR LEASE
RETAIL 23 - 77.1sqm SALE OR LEASE

ADAM ROSSI 0414 864 244
2530 Lonsdale St Melbourne
Ph: 0642 1886
arossi@cityfringe.com.au

CFP



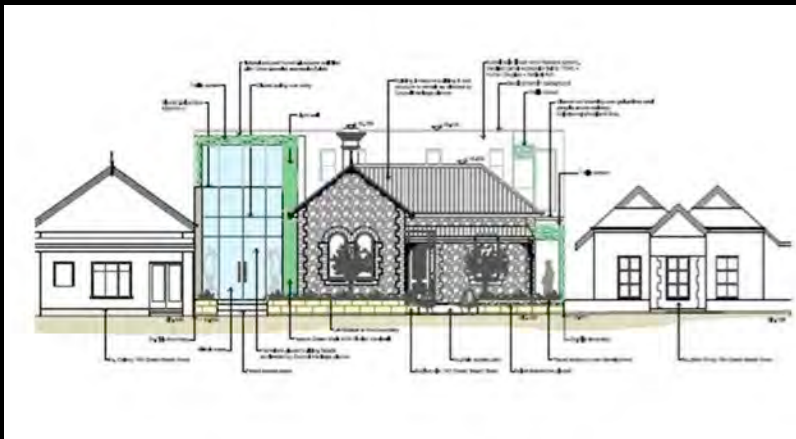
Changing Sorrento



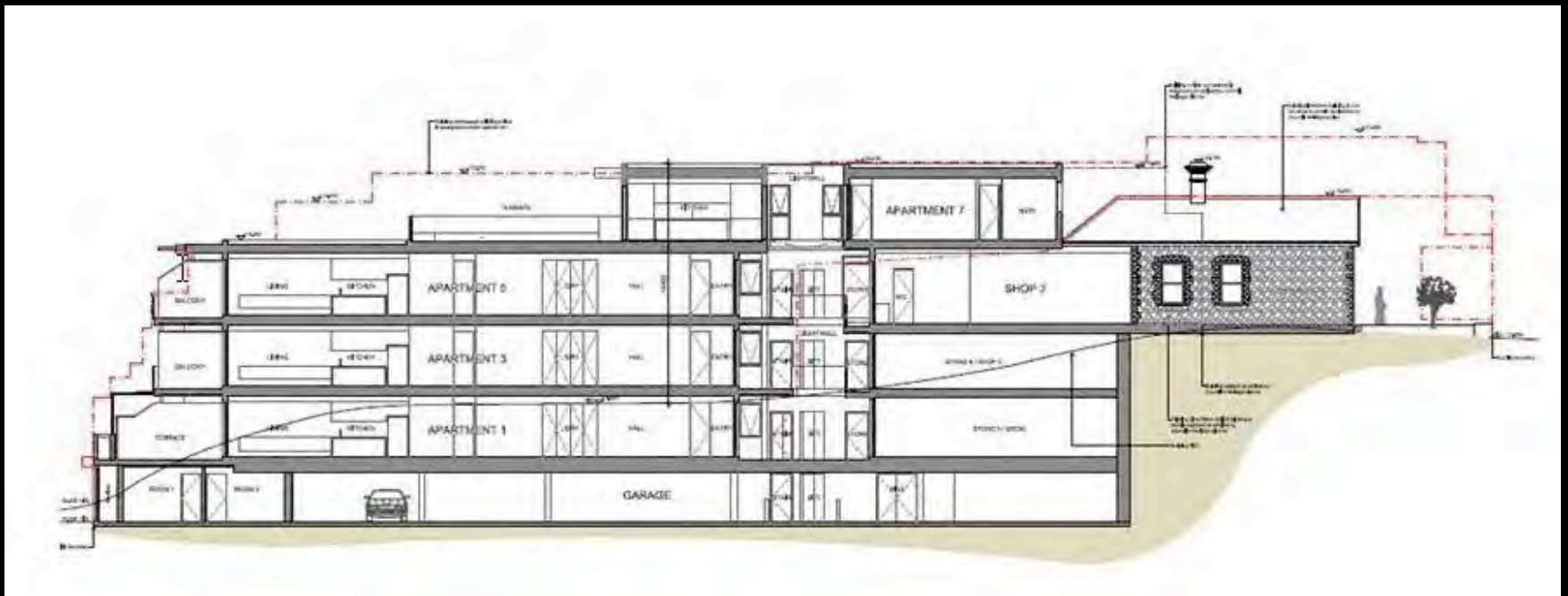
Sorrento Heritage continues to be under threat from development:



Changing Sorrento: watch this space



Changing Sorrento: Carmel proposal 2015 now under construction ... neighbourhood character?



Sorrento Heritage continues to be under threat from development:

Changing Sorrento: Who has been watching Morce Ave??? Where has incremental change led?



. In 2014 the Greater City of London examined character and context in the shaping of neighbourhoods. They stated that Character is created by the interplay of different elements, including the physical or built elements that make up the place, the cultural, social and economic factors which have combined to create identity, and the people associated with it through memories, association and activity.

Context can be defined as the way in which places, sites and spaces inter relate with one another whether physically, functionally or visually, or the way in which they are experienced sequentially and understood.

In the process to understand the character of a place they advise above all else “to understand what is important to the people”. As pressures for change in this historic coastal town of Sorrento continue, the MPS would do well heed this advice.

Sorrento Heritage continues to be under threat from development:



Changing Sorrento: watch this space
SOLD for \$11.6m in 2016



Sorrento Heritage continues to be under threat from development:



Changing Sorrento: ... watch this space

Sorrento Heritage continues to be under threat from development:



Changing Sorrento: ... the seawall nears completion

Sorrento Heritage continues to be under threat from development:



Changing Sorrento ... just a coat of paint!

Sorrento Heritage continues to be under threat from development:



Changing Sorrento: Conti sold

Sorrento Heritage continues to be under threat from development:



Changing Sorrento: development MPSC and HV permit granted, view from the Bay (collage G Naughton)

Sorrento Heritage continues to be under threat from development:



Changing Sorrento: development MPSC and HV permit granted, CH Road (collage G Naughton)

Sorrento Heritage continues to be under threat from development:



Changing Sorrento: Conti landmark heritage building in a small historic coastal township ...VCAT heard the permit appeal over four days 30, 31 January 1 and 2 February 2017 ...

Sorrento Heritage continues to be under threat from development:



Changing Sorrento: development MPSC and HV permit granted, Ocean Beach Road (collage G Naughton)

Mornington Peninsula National Park



Who cares for a National Park when resources are depleted?

Mornington Peninsula National Park




7/11/17
18/1/17

MORNINGTON PENINSULA NATIONAL PARK
Please Be Aware!

Hooded Plover Breeding Area

THESE SHORE BIRDS ARE A THREATENED SPECIES.
THEY LIVE, BREED AND FEED ONLY ON OCEAN BEACHES






Nests are easily trampled, breeding adults readily disturbed, chicks are tiny, hard to see and cannot fly. Please help us to protect Hooded Plovers by keeping clear of dune areas and sign posted nests.

Thank You

Chicks are due to hatch: 20/1/17
Chicks are due to fledge: end of Feb 2017
Update: (Fly)

Chicks have hatched, extremely vulnerable. Please give the family plenty of space. 😊

For more information:
Ring Parks Victoria 13 1963
Visit www.birdsaustralia.com.au/bca/bca
Email: hploversmorpen@gmail.com

Mornington Peninsula National Park

Summer 2016/17 – pressures on place ...

Caring for a National Park when resources are depleted? Who follows through on regulations?

Camping in the National Park? Dumping in the National Park? Illegal parking? Dogs off leash?





Launch of the new plant brochure: June 2016

caring for biodiversity on the Nepean Peninsula



Launch of the new plant brochure

caring for biodiversity on the Nepean Peninsula

Guide to INDIGENOUS PLANTS and WEEDS of the Nepean Peninsula



INTRODUCTION
This publication aims to encourage awareness and appreciation of our natural environment and emphasises the importance of protecting and maintaining the remaining indigenous vegetation on the Nepean Peninsula. With raised awareness of its value we hope to encourage members to assist in protecting indigenous plants in their local and roadside reserves and where they have been seen in scrubby or grassy areas with indigenous plants like:

Recognition of these plants and the major weed species is a necessary first step in the protection and restoration of this environment. It aims to identify a brief description of our plants and the major weed species a photo under the images.

Sets of the Nepean Peninsula
Sets on the southern end of the Nepean Peninsula is shown on the map in yellow, as compared to a yellowish white. The natural vegetation in this area is highly fire sensitive. This area has also adapted to include the heath coastal environment and the heath of the mountains.

Coastal Heath Woodland
Much of the original vegetation in Coastal Heath Woodland was destroyed. There was extensive land clearance, the water being used for the fish farming. After 1988, some European settlement on 90% of this woodland community had been cleared. Our conservation program, "Conserving the Coast" emphasises the importance of the coastal heath woodland.

Historical Background
The Aboriginal people who lived in this area managed the land to use their burning and gathering through and know the life cycles of the plants and animals. They used fire to encourage new growth of grasses and shrubs and to open up the land for hunting. Apart from volcanic ash and ash, a major source of Aboriginal land from the underground water pipes of plants, which were collected throughout the year.

With the arrival of European settlers to the Peninsula in the 1820s, much of the vegetation, largely dominated by Banksia and Sida, was destroyed. There was extensive land clearance, the water being used for the fish farming. After 1988, some European settlement on 90% of this woodland community had been cleared. Our conservation program, "Conserving the Coast" emphasises the importance of the coastal heath woodland and the protection of the natural vegetation is being assessed by increasing biodiversity and the impact of environmental weeds.

Friends Group
Friends groups volunteer are involved with weed removal, plant collection and propagation in the Nepean Park, Berrigalong, heathland and roadside reserves. Members are able to get grants. Your participation in these activities would be most welcome. See contact details below.

A HONORARIUM PENINSULA COLLECTING PLANNING
FURTHER INFORMATION
Nepean Conservation Group Inc.
Website: www.nepeanconservation.org.au
Nepean Conservation Group Inc. (NSW)
Wattle Park, 1211-1213, Berrigalong Creek, Berrigalong Falls, Nepean P.O. Box 157 BERRIGALONG VIC 2543

Nepean Conservation Group Inc.
Nepean Conservation Group Inc.
Phone: 3074 8617
Website: www.nepeanconservation.org.au
Email: nepean@nepeanconservation.org.au
Nepean and Environmental Weeds and Plant Pathogens, Nepean Peninsula Bios 2012

ACKNOWLEDGMENTS
Daphne Jorg, Catherine Price, Peter Hines, Boba, Cindy Walker, Oliver, "The Garden" Nursery, Flora of Peninsular 2014, G. J. Patten, Steve Hignett, and others for their assistance in the field and for their contribution to the brochure.

This publication has been funded by the Nepean Conservation Group Inc. and the Nepean Peninsula Bios 2012.

Nepean Conservation Group Inc. AGM 2017

CLIMBERS AND SCRAMBLERS

Climbing Ligustrum (*Ligustrum lucidum*)
A large, woody climber with dark green, glossy leaves and small, white flowers. It is a common weed in coastal areas.

Sticky Sida (*Sida acuta*)
A climbing plant with sticky, reddish-brown flowers and a thick, woody stem. It is a common weed in coastal areas.

Ruscus (*Ruscus aculeatus*)
A woody climber with small, white flowers and a thick, woody stem. It is a common weed in coastal areas.

Bower Spinnach (*Thlaspi arvense*)
A climbing plant with small, white flowers and a thick, woody stem. It is a common weed in coastal areas.

Karriakia (*Caricium*)
A climbing plant with small, white flowers and a thick, woody stem. It is a common weed in coastal areas.

Bush Pea (*Pisum sativum*)
A climbing plant with small, white flowers and a thick, woody stem. It is a common weed in coastal areas.

Coast Twin-leaf (*Lythrum hyssagifolium*)
A climbing plant with small, white flowers and a thick, woody stem. It is a common weed in coastal areas.

Coast Treason Palm (*Phoenix australis*)
A climbing plant with small, white flowers and a thick, woody stem. It is a common weed in coastal areas.

SMALL PLANTS AND GROUND COVERS

Ruscus (*Ruscus aculeatus*)
A small plant with small, white flowers and a thick, woody stem. It is a common weed in coastal areas.

Bush Pea (*Pisum sativum*)
A small plant with small, white flowers and a thick, woody stem. It is a common weed in coastal areas.

Coast Twin-leaf (*Lythrum hyssagifolium*)
A small plant with small, white flowers and a thick, woody stem. It is a common weed in coastal areas.

Coast Treason Palm (*Phoenix australis*)
A small plant with small, white flowers and a thick, woody stem. It is a common weed in coastal areas.

Pink Flax (*Linum catharticum*)
A small plant with small, white flowers and a thick, woody stem. It is a common weed in coastal areas.

Lady Greenhood (*Limnolobos*)
A small plant with small, white flowers and a thick, woody stem. It is a common weed in coastal areas.

WEEDS

Purple or White-leaf Milkwort (*Polypogon monspeliensis*)
A weed with small, purple or white flowers and a thick, woody stem. It is a common weed in coastal areas.

Redcap or Bridal Creeper (*Impatiens trugonoides*)
A weed with small, red or white flowers and a thick, woody stem. It is a common weed in coastal areas.

Delonix (*Delonix reginae*)
A weed with small, red flowers and a thick, woody stem. It is a common weed in coastal areas.

Cape Ivy (*Impatiens capensis*)
A weed with small, white flowers and a thick, woody stem. It is a common weed in coastal areas.

Hebe Bush-tender (*Hebe*)
A weed with small, white flowers and a thick, woody stem. It is a common weed in coastal areas.

Seaforthia (*Seaforthia*)
A weed with small, white flowers and a thick, woody stem. It is a common weed in coastal areas.

Sweet Pittosporum (*Pittosporum*)
A weed with small, white flowers and a thick, woody stem. It is a common weed in coastal areas.

Common Sea Heath (*Phacelia*)
A weed with small, white flowers and a thick, woody stem. It is a common weed in coastal areas.

Myrtle Bush-tender (*Myrtle*)
A weed with small, white flowers and a thick, woody stem. It is a common weed in coastal areas.

Eucalyptus (*Eucalyptus*)
A weed with small, white flowers and a thick, woody stem. It is a common weed in coastal areas.

Agapanthus (*Agapanthus*)
A weed with small, white flowers and a thick, woody stem. It is a common weed in coastal areas.

English Ivy (*Hedera*)
A weed with small, white flowers and a thick, woody stem. It is a common weed in coastal areas.

Bushlet Creeper (*Bushlet*)
A weed with small, white flowers and a thick, woody stem. It is a common weed in coastal areas.

Blue Pernettya (*Pernettya*)
A weed with small, white flowers and a thick, woody stem. It is a common weed in coastal areas.

Austral Bayla (*Bayla*)
A weed with small, white flowers and a thick, woody stem. It is a common weed in coastal areas.

MEMBERSHIP APPLICATION - PAYMENT DETAILS

Check/My card for \$10 is enclosed with this application form.
 Please tick if you are a returning member.
 Please tick if you are a new member.
 Please tick if you are a life member.
 Please tick if you are a life member (over 65 years of age).
 Please tick if you are a life member (over 70 years of age).
 Please tick if you are a life member (over 75 years of age).
 Please tick if you are a life member (over 80 years of age).
 Please tick if you are a life member (over 85 years of age).
 Please tick if you are a life member (over 90 years of age).
 Please tick if you are a life member (over 95 years of age).
 Please tick if you are a life member (over 100 years of age).

Nepean Conservation Group Inc.
 Wattle Park, 1211-1213, Berrigalong Creek, Berrigalong Falls, Nepean P.O. Box 157 BERRIGALONG VIC 2543
 Phone: 3074 8617
 Website: www.nepeanconservation.org.au
 Email: nepean@nepeanconservation.org.au

Biodiversity and Fire Management Workshop

29 October 2016 – NCG in partnership with the MPS

Outcome: a Fire and Conservation Strategy for the Nepean Peninsula.



Biodiversity and Fire Management Workshop

29 October 2016 – NCG in partnership with the MPS

Outcome: a Fire and Conservation Strategy for the Nepean Peninsula

Key recommendations:

- Learning from what we are doing;
- Communication;
- Training and best practice;
- Friends and volunteers;
- embracing the Nepean peninsula community;
- lobby to establish a BOM weather station on the NP.

NEXT: WORKING TOWARDS IMPLEMENTATION



Point Nepean National Park



Point Nepean by Acrofoto.59684044

The NCG is against inappropriate development in National Parks. The NCG supports the reinstatement of a fully integrated National Park at Point Nepean; and a management plan that respects and protects the natural and cultural heritage of this unique place now and in the future.

The NCG considers that the final outcome should be a bipartisan agreement to secure the future of the former QS precinct within the PNNP.

The NCG would like to see a holistic consideration of the sustainable use(s) for the entire site.

The principles of conservation, inspiration, sustainability and accessibility need clarification and definition to align with the values of this unique place.





Friends Groups make difference



Friends Groups

“
...
volunteers
are an
essential
part of the
ecosystem
”
...

Friends Groups make a difference

For biodiversity by caring for bushland parks and coastal reserves, for flora and fauna, for habitat on the Nepean Peninsula

Diamond Bay

Dimmick's Bushland Reserve (Carlsruhe Ave)

E G Ritchie Flora Memorial Reserve

Hooded Plovers = FoHP

Sid Baker Reserve

Slips Reserve

Tuckey Track Reserve

Sullivan's Bay

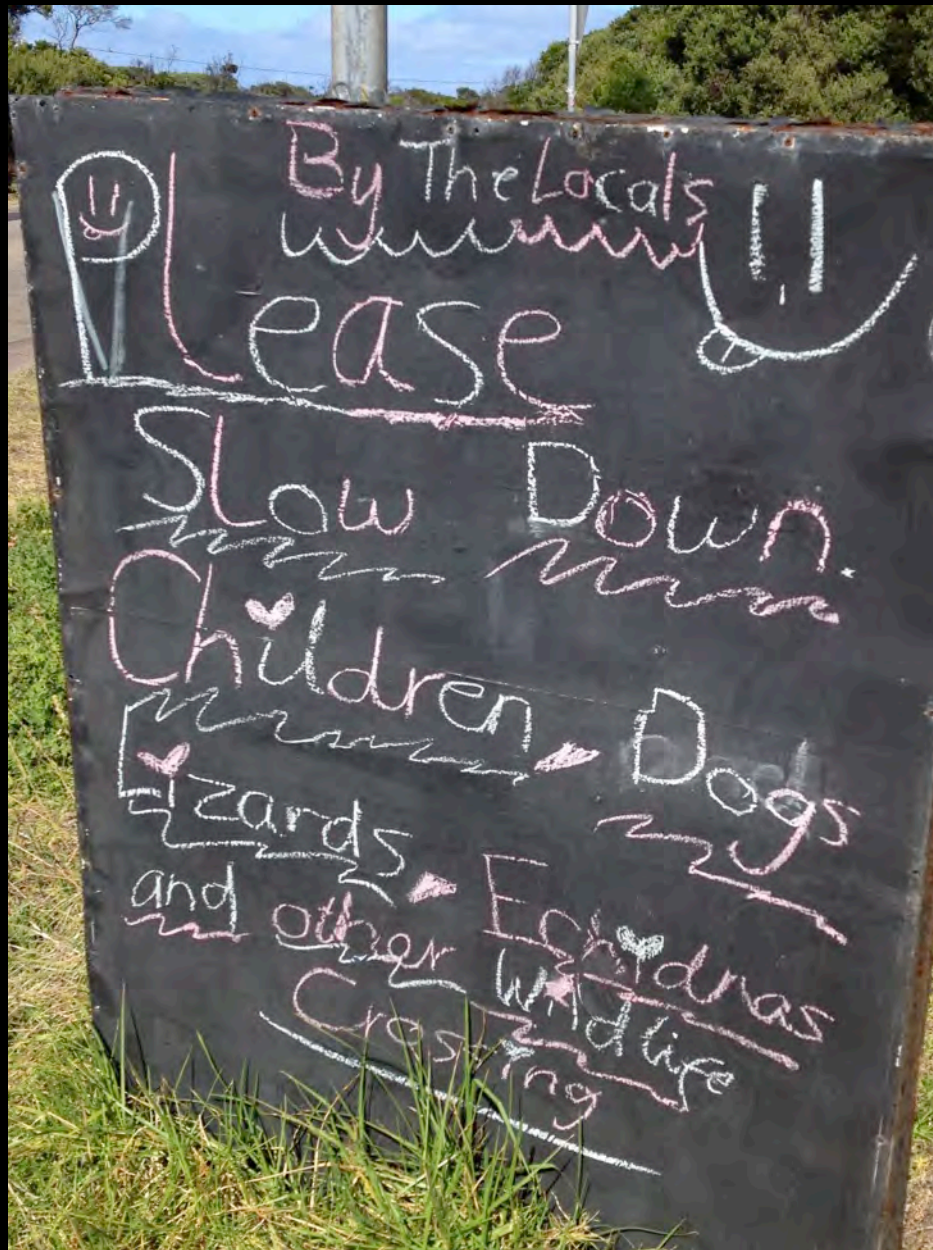
Spray Point Wild Coast

Friends of Bridgewater Bay

Working in Point Nepean National Park and Mornington Peninsula National Park; in Shire reserves and parks

PV, the MPSC and the NCG thank all our volunteers and welcome you to join a group ...





NCG Membership ...

Membership numbers are stable ...

If we are to continue to make a difference we need to be a relevant vibrant organisation ... whose members actively advocate for our environment

We have made a concerted effort to follow up with those members who have indicated an interest in providing some assistance to the Committee.

In 2017 we again challenge every member to sign up one new member!



NCG Seasonal rambles



Seasonal rambles have proved very popular ...and continue in 2017 – check member emails, NCG Newsletters, the NCG website and come along – discover something new!

Monthly community meetings...

The restructured “Nepean Coalition Group” in line with the changes to the Nepean Ward continue to meet once a month with our Councillors in order to consider and to prioritise matters that should be actioned within the Ward.

These meetings provide both us and our councillors with the opportunity to focus on matters of major concern to our community, as well as offering Council officers an opportunity to attend and update us on actions they are taking with regard to community concerns.





Finally a thank you to all our volunteers - in whatever capacity you volunteer, your time and energy and expertise are appreciated!



Together we will keep on going forward (backwards) forward!



- (a) To make every effort to ensure that the land and waters of the [Nepean Peninsula] are used with wisdom and foresight and that the competing demands upon them are resolved in the best long terms interests thereof
- (b) To foster the conservation of the vegetation and fauna and natural features ...
- (c) To cooperate with, or promote cooperation ... among persons, trusts, corporations, firms, associations, institutions, governments, ... concerned with or interested in conservation
- (d) generally, to take such action as it considers necessary or appropriate in the interests of promoting conservation...

Any comments or questions?





Nepean Conservation Group

Caring for Our Country since 1973

2016 Treasurer's report

Edward Cohen





Nepean Conservation Group

Caring for Our Country since 1973

6. Election of Committee for 2017

Nominations received:

Edward Cohen, Jill Robinson , John Franklin, Eddy de Jong; Ian Haskins, Lisa Howard, John Trewarne, Sarah Patterson, Ruth Belfrage, Ursula de Jong, Gary Naughton, Barend Frielink

John Franklin has stepped down from the NCG committee, but will continue in role of membership officer





Nepean Conservation Group

Caring for Our Country since 1973

7. General Business

8. Close of AGM



NCG is pleased to welcome David Gabriel-Jones





Nepean Conservation Group

Reminder:

Housekeeping notes

Enjoy your picnic dinner in PNNP this evening. Please take your rubbish home with you

Please leave the PNNP by 8.00 pm

Thank you to PV for the venue, the support and warm welcome



